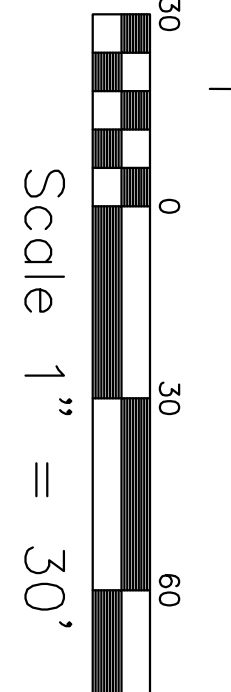
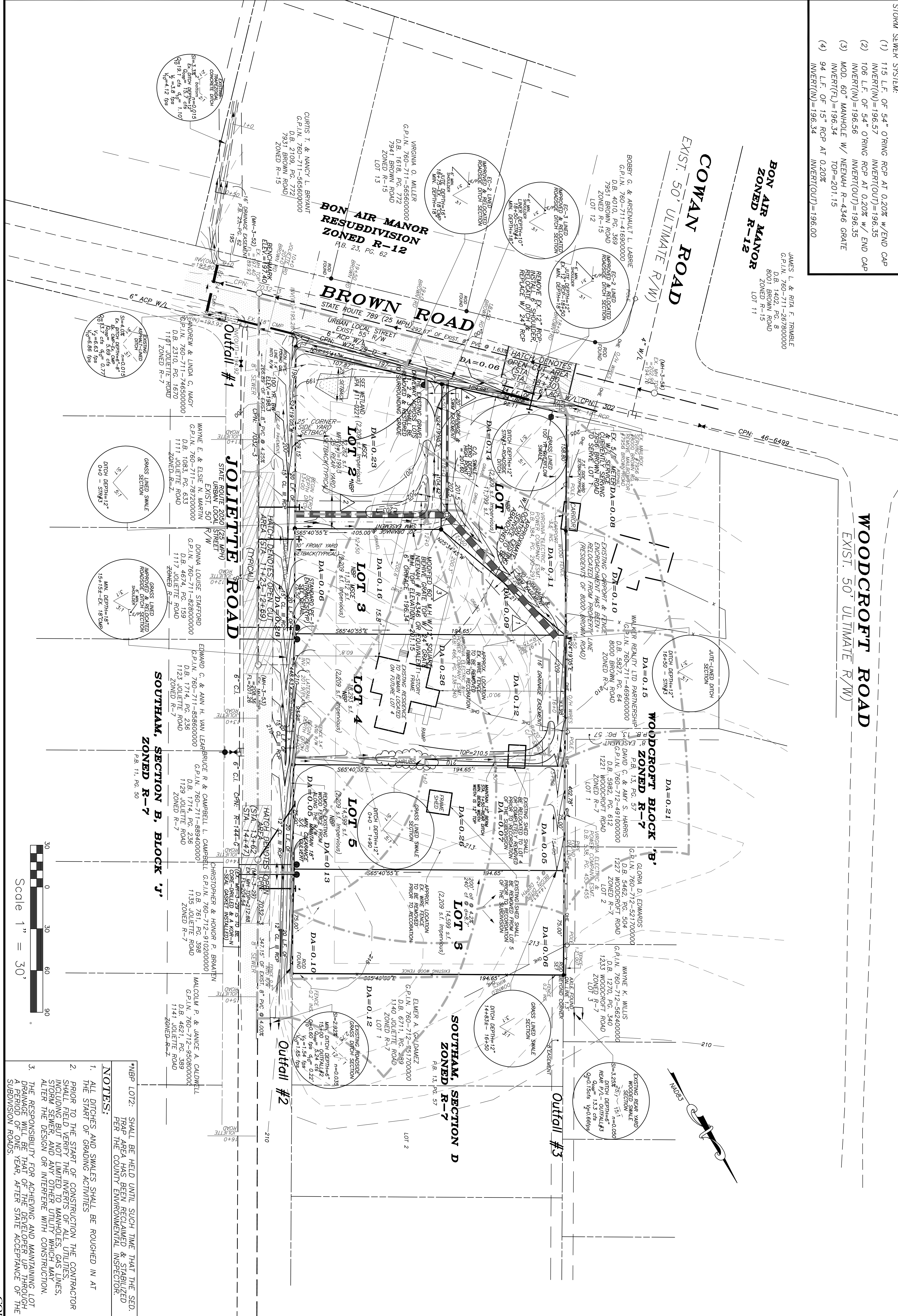


TENTATIVE CONDITION

1.h. MINIMUM CRAWL SPACE ELEVATIONS WILL BE SPECIFIED FOR LOTS 2 AND 3, WHICH MUST BE VERIFIED BY THE ENGINEER/SURVEYOR PRIOR TO THE PLACEMENT OF FLOOR JOISTS ON THE FOUNDATION WALL OF THE HOUSE.

DRAINAGE SCHEDULE:

- DRIVEWAY CULVERTS:
- (1) 24 L.F. OF 24" RCP ON GRADE
 - (2) 20 L.F. OF 12" RCP ON GRADE
 - (3) 20 L.F. OF 15" RCP ON GRADE
- STORM SEWER SYSTEM:
- (1) 115 L.F. OF 54" O'RING RCP AT 0.20% W/END CAP
INVERT(IN)=196.57 INVERT(OUT)=196.35
 - (2) 106 L.F. OF 54" O'RING RCP AT 0.20% W/ END CAP
INVERT(IN)=196.56 INVERT(OUT)=196.35
 - (3) MOD. 60" MANHOLE W/ NEMAH R-4346 GRATE
INVERT(FI)=196.34 TOP=201.15
 - (4) 94 L.F. OF 15" RCP AT 0.20%
INVERT(IN)=196.34 INVERT(OUT)=196.00



- NOTES:**
1. ALL DITCHES AND SWALES SHALL BE ROUGHED IN AT THE START OF GRADING ACTIVITIES
 2. PRIOR TO THE START OF CONSTRUCTION THE CONTRACTOR SHALL FIELD VERIFY THE INVERTS OF ALL UTILITIES INCLUDING BUT NOT LIMITED TO MANHOLES, GAS LINES, STORM SEWER, AND ANY OTHER UTILITY WHICH MAY ALTER THE DESIGN OR INTERFERE WITH CONSTRUCTION.
 3. THE RESPONSIBILITY FOR ACHIEVING AND MAINTAINING LOT DRAINAGE SHALL BE THE RESPONSIBILITY OF THE DEVELOPER THROUGHOUT THE LIFE OF THE PROJECT AND FOR A PERIOD OF ONE YEAR AFTER STATE ACCEPTANCE OF THE SUBDIVISION ROADS.

DATE:	REMARKS:
11/29/10	PER COUNTY COMMENTS
02/23/11	COMMENTS/DITCH PROFILE
03/24/11	DETAIL/MS-19

DATE: OCTOBER 29, 2010
SHEET NO.: 5 OF 9
SCALE: 1" = 30'
JOB NO.: 1007-06
COUNTY PROJ. 10-0193

GRADING AND DRAINAGE SHEET
SOUTHAM, SECTION F
 A RESUBDIVISION OF PART
 OF LOT 37, JAHNKE PLACE
 MIDLOTHIAN DISTRICT
 CHESTERFIELD COUNTY, VIRGINIA

POTS, MINTER, AND ASSOCIATES P.C.
 Engineers, Land Surveyors, Land Planners
 3520 S. Courthouse Road Richmond, Va. 23236
 Phone: (804) 745-2876 Fax: 745-9571

DESIGNED BY: C.C.M.
 DRAWN BY: K.M.C.
 CHECKED BY: C.C.M.

COMMONWEALTH OF VIRGINIA
 Christopher C. Mulligan
 Lic. No. 031872
 PROFESSIONAL ENGINEER